

PUBLIC AUCTION

Sunday, October 26, 2014 at 10:00 A.M.

**All Day Preview: Saturday, October 25 from 9:00 A.M. to 5:00 P.M.
& 2 Hours Prior to the Sale on Sunday**

Auction Location: 121 Deady Crossing, Sutherlin, Oregon 97479

Heavy Equipment, Trucks, Trailers, Vehicles, Farm Equipment, Woodworking Tools, Shop Tools & More



2008 MORGAN BUILT 3H LEGACY GN
WITH TACK ROOM—LIKE NEW!



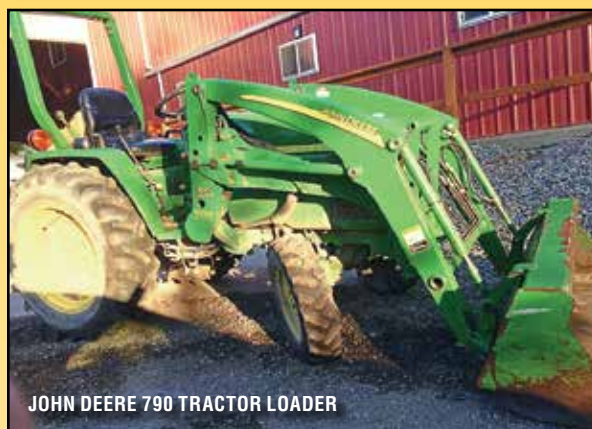
HYSTER H80XM 8000-LB LP



2011 ITASCA NAVION RV—LOW MILES!



JOHN DEERE 690ELC
WITH SHAMROCK GRAPPLE



JOHN DEERE 790 TRACTOR LOADER

SALE SITE PHONE:

(541) 643-6102

A 10% BUYER'S PREMIUM APPLIES

For Additional Details Visit Our Website www.I-5auctions.com

I-5auctions.com

(541) 673-5636 • info@I-5auctions.com • www.I-5auctions.com



BOBCAT SWEEPER ATTACHMENT



JOHN DEERE 410D TRACTOR LOADER BACKHOE



POWDER RIVER 16' LIVESTOCK PANELS



PRIEFERT 12' LIVESTOCK PANELS



WISCONSIN POWERED 4" WATER PUMP



MITSUBISHI R1500 TRACTOR LOADER WITH TILLER



GALVANIZED LIVESTOCK ROUND PEN WITH GATE



PACIFIC 8500M GENERATOR



PAK TANK 3-POINT SPRAYER



3-POINT BROADCAST FERTILIZER SPREADER



HYSTER H5.00 XL 10,000-LB LP



(1 OF 2) HYSTER S80 XL2 BCS 8,000-LB LP FORKLIFTS



(1 OF 2) HYSTER S80 XL 8,000-LB LP FORKLIFTS

CONSTRUCTION EQUIPMENT

JOHN DEERE 690ELC with Shamrock Grapple.
KOMATSU PC45 Mini Excavator with Thumb.
TENNANT Series II Sweeper.
BOBCAT Sweeper Attachment.
CENTENNIAL Towable Portable Gas Air Compressor.
WISCONSIN Powered 4" Water Pump.
BELLE AFS 350 Gas-Powered Walk-Behind Concrete Cutter. Concrete Forms and More.

FARM EQUIPMENT

JOHN DEERE 790 Tractor Loader.
MITSUBISHI R1500 Tractor Loader and Tiller.
(2) DAVID BRADLEY Walk-Behind Tractors with Implements.
POWDER RIVER 16' Livestock Panels.
PRIEFERT 12' Livestock Panels. Assorted Livestock Panels and Gates.
POWDER RIVER Calf Table.
POWDER RIVER Head Gate.
Galvanized Livestock Round Pen with Gate.
HYDRA-DRILL Well Driller.
PAK TANK 3-Point Sprayer.
KING KUTTER 3-Point 6' Tandem Offset Disc.
NEW HOLLAND Hayliner 269 Hay Baler.
MASSEY FERGUSON 12 Hay Baler.
UNIVERSAL Creep Feeder.
3-Point Broadcast Fertilizer Spreader.
3-Point Post Hole Auger.
Manure Spreader.
Aluminum Pick-Up Stock Rack.
3-Point Cherry Picker.
3-Point Mole/Gopher Baiter.
3-Point FRESNO.
3-Point Windrow Turner.
KUBOTA Mower Deck Attachment.
Galvanized Stock Tank and More.

GENERATORS, GENSETS & LIGHT PLANTS

HONDA 5KVA Gas-Powered Generator.
PACIFIC 8500M Industrial Generator.
HONDA EX 5500 Generator. Diesel Genset.

FORKLIFTS

HYSTER H5.00 XL, LP, 10,000-lb.
HYSTER H80 XM, LP, 8000-lb.
(6) HYSTER H80 XL and XL2 LP, 8000-lb.
(2) HYSTER H4.00 XL2, LP, 8000-lb.
(2) HYSTER S80 XL2, BCS, LP, 8000-lb.
(2) HYSTER S80 XL, LP, 8000-lb.
LIFTALL LT60D Towable Diesel 6000-lb.

MANLIFTS

GENIE Z45/22 LPG.
JLG 12SP Electric Stock Picker.
MARKLIFT Electric Scissor Lift.

TRUCKS

2000 VOLVO VN.
1979 FORD 9000 3-Axle Flat Bed with 350 Cummins.
1984 INTERNATIONAL S1900 3-Axle Flat Bed with DT 466.
1978 GMC Fertilizer Truck.

TRAILERS

2008 MORGAN BUILT Legacy 3H GN Horse Trailer with Tack Room.
1992 FRUEHAUF 48' Van Trailer.
1997 MORGAN BUILT 3H Bumper Pull with Tack Room.
NEW Homebuilt 5 x 8 Utility Trailer.
16' Enclosed Office Trailer.
Gooseneck Stock Trailer.
26' 5th Wheel Stock Trailer.
4 x 6 Flatbed Utility Trailer.

RV

2011 ITASCA Navion RV by WINNEBAGO - LOW Miles!

BOAT

18' SEA RAY.



GENIE Z45-22 LPG



2000 VOLVO VN



48' FRUEHAUF VAN TRAILER



1997 MORGAN BUILT 3H BUMPER PULL WITH TACK ROOM

NEW HOMEBUILT 5 X 8 TRAILER



JLG 12-SP ELECTRIC STOCK PICKER



1979 FORD 9000



1984 INTERNATIONAL S1900



1978 FERTILIZER TRUCK



For Additional Details Visit Our Website www.i-5auctions.com



2007 ARCTIC CAT

ATVs

2007 ARCTIC CAT.
CUSHMAN ATV.
YAMAHA Grizzly 125.
Mini Quad.

PICK UPS

2004 FORD F-150
Quad Cab.
2002 DODGE Ram Ext. Cab,
4x4 diesel.
(2) 2004 FORD F-150.
1996 DODGE Ram 2500 4x4.
1990 Mazda B2600i.
1995 FORD F-250.
2005 CHEVROLET 2500.
2003 CHEVROLET.
1989 CHEVROLET 3500
Flatbed.

1982 CHEVROLET
C30 Flatbed.

**PASSENGER
VEHICLES**

2000 HONDA
Accord.
2002 FORD Taurus.
2004 DODGE
Intrepid.
1966 CHRYSLER
Newport.
1999 FORD Taurus.
2010 FORD Crown
Victoria.
2008 FORD Crown
Victoria.
2008 FORD Crown
Victoria Police
Interceptor.



2002 DODGE EXT. CAB 4X4 DIESEL



2004 FORD F-150 QUAD CAB



2000 HONDA ACCORD



1966 CHRYSLER NEWPORT

SHOP EQUIPMENT

BRIDGEPORT Mill.
DO ALL Surface Grinder.
SOUTHBEND Lathe.
SNAP-ON YA240A Mig Welder and
Accessories.
MILLER Plasma Cutter.
Sand Blasting Pot.
AIRCO Gas-Powered Trailer Mounted
Welder.
ROCKWELL/DELTA Drill Press.
POWR-QUIP 6 HP Air Compressor.
PACIFIC EQUIPMENT PAC-2T
Gas-Powered Air Compressor.
GANTRY Crane with Chain Fall
and Trolley.
JIB Crane with 1/2-Ton Electric Hoist.
WISCONSIN Powered Portable
Air Compressor.
ZEP Parts Washing Cabinet.
Rotary Storage Bin.
JUST RIGHT Flammable Liquid Storage
Cabinet.
CUT-A-LINE Oxy-Acetylene
Track Burner.
ORBIT Bench Top Drill Press.



(1 OF 2) 2004 FORD F-150



1996 DODGE RAM 2500 4X4



2005 CHEVOLET 2500



2010 FORD CROWN VICTORIA



WOODMASTER 6 X 24
PLANER-SHAPER

ROGERS Tank Mounted Air Compressor.
Bead Blast Cabinet.
Assorted Oxy-Acetylene Torch Carts.
Assorted Hydraulic Bottle Jacks/Floor Jacks and
Jack Stands.
Assorted Bench Grinders.
Wood and Steel Top Work Benches.
Assorted Measuring Equipment, End Mills and Bits.
Assorted Vices and More.

WOODWORKING EQUIPMENT

LEGACY Ornamental Mill.
JET 10" Table Saw with XACTA Fence and Extension.
SHOPSMITH 2000 Table Saw with BIESMEYER Fence.
WOODMASTER 6 x 24 Planer – Shaper.
DeWALT 12" Compound Miter Saw with DeWALT Stand.
HITACHI 10" Compound Miter Saw with TROJAN Stand.
ROCKWELL Scroll Saw.
SHOPSMITH Scroll Saw.
SHOPSMITH Power Source with Bandsaw Attachment.
SHOPSMITH Multi-Tool.
Assorted CRAFTSMAN and RIGID Shop Vacs.
WOODHAVEN Large Oval Jig Kit.
WOODHAVEN Dado Jig Kit.
Assorted Dado/Saw Blades, Plunge Drivers, T-Squares,
Straight Edges, Clamps, Drill Bits and More.
WAGNER Paint Sprayer.
SHOPSMITH Attachments.
Dust Collector.
Table Saw Attachments.
DELTA Shopmaster Table Saw.
Assorted Miter Box Saws.
CRAFTSMAN 10" Table Saw and More.

TOOLS

Power Hand Tools including: CRAFTSMAN, MAKITA,
HITACHI, PORTER CABLE, BOSCH, and MILWAUKIE.
Adjustable End Wrenches, Pipe Wrenches, Combination
Wrenches and Socket Sets including: SNAP-ON,
CRAFTSMAN, PROTO and RIGID Brands.
Assorted Pneumatic Nail Guns including HITACHI,
SENCO and More.



BRIDGEPORT MILL



SNAP-ON YA240A MIG WELDER



MILLER PLASMA CUTTER



CRAFTSMAN BELT,
DISC SPINDLE SANDER



LEGACY ORNAMENTAL MILL



JET 10" TABLE SAW WITH XACTA FENCE
AND EXTENSION



DEWALT 12" COMPOUND
MITER SAW WITH DEWALT STAND



SHOPSMITH 2000 TABLE SAW
WITH BIESMEYER FENCE



HITACHI 10" COMPOUND MITER SAW
WITH TROJAN STAND

142 Deady Crossing, Sutherlin, Oregon 97479
(541) 673-5636

www.I-5auctions.com

Auction Location: 121 Deady Crossing, Sutherlin, Oregon 97479

Sunday October 26, 2014 at 10:00 A.M.

Heavy Equipment, Trucks, Trailers, Vehicles, Farm Equipment, Woodworking Tools, Shop Tools & More



KOMATSU PC45 MINI EXCAVATOR
WITH THUMB

HOME & GARDEN

JOHN DEERE L110 Riding
Lawnmower.
HUSTLER Shortcut
1500 Mower.
KUBOTA F2400 4x4 Mower.
DR Gas-Powered Wood Chipper.
DOSKO Gas-Powered Chipper/
Mulcher.
HUSQVARNA 61 Chainsaw.
EARTHWISE 24v Cordless
Lawn Mower.
POWER TRIM Honda
Powered Edger.
CRAFTSMAN 3000 PSI
Pressure Washer.
ADVANCE Gas-Powered
Pressure Washer.
DIRT KILLER Gas-Powered
Pressure Washer.
LANDA Gas-Powered Hot Water
Pressure Washer and More.

SPORTING GOODS

Fishing, Hunting and Diving
Equipment (incl. Rods, Decoys,
etc).
Crab Pots.
Camping Gear.
Gun Safe.
Large Quantity of RC Cars and
Accessories.
MONGOOSE Mountain Bike.
Vintage ROADMASTER Bicycle.
WEIDER Weight Machine.
Assorted Saddles.
Clay Pigeon Thrower.

MISCELLANEOUS

(2) 20' Shipping Containers.
DIECAST Collectible Replica Cars.
FAIRBANKS MORSE
Platform Scale.
FOLEY and BELSAW Sharpening
Equipment.
REX Commercial Sewing Machine.

BIRO Meat Saw.
KEENE ENGINEERING Portable
Gold Dredge.
Antique Chest with Vintage
Accordion.
Antique Cash Register.
Vintage Wooden Rocking Horse.
Electric Power Sewer Snake.
MIKASA Gas-Powered Jumping
Jack Compactor.
AIRCO Trailer Mounted Portable
Gas Welder.
Assorted Rope.
Assorted Tail Blocks.
Lot of Dryer Rolls.
Geofabric Rolls.
Personal Lockers.
Tractor Tires/Wheels.
Assorted Fire Hose.
DODGE Transmissions and
Transfer Cases.
Step Ladders.



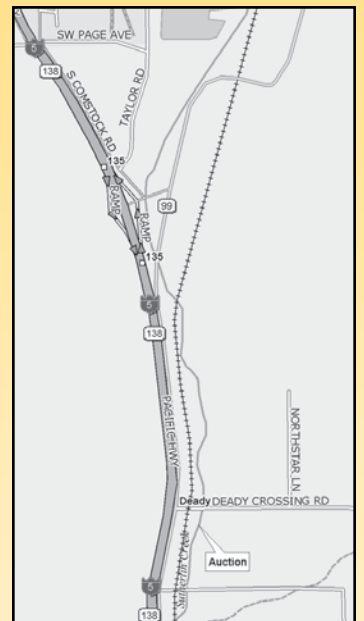
(1 OF 2) 20' SHIPPING CONTAINERS



DRYER ROLLS

A 10% BUYER'S PREMIUM APPLIES

Aluminum Diamond Plate Cross
Bed Tool Boxes.
Aluminum Diamond Plate
Vehicle Ramps.
Particle Board.
Light Poles.
Assorted Tires/Wheels.
Propane Space Heaters and More.



TERMS OF SALE

Cash, credit cards, cashier's check, or your approved company or personal check. No purchases may be removed until paid for in full. Purchasers paying with personal or business checks may not take delivery of sale items in excess of \$2,000 without a letter of guarantee from their bank or until their check is honored by their financial institution. Letters of guarantee must be appropriately dated and addressed to "I-5 Auctions" and state, "This letter of guarantee is not revocable and Bank will guarantee payment on purchaser's check even in the event purchaser places or attempts to place a stop payment order on his or her check." All purchasers must read and acknowledge the terms of sale provided at the auction. All items are sold "as is, where is" with no express or

implied warranties. I-5 Auctions shall not be held responsible for advertising inaccuracies. A 10% buyer's premium will be applied to all purchases.

REMOVAL OF ITEMS

All items must be removed on or before Wednesday, October 29, at 5:00 P.M. unless other arrangements are made with I-5 Auctions.

DIRECTIONS

Take I-5 Exit 135 (South Sutherlin-Wilbur Exit) and proceed to east side of I-5. Turn right (south) and proceed one mile to sale site on your left. Watch for auction signs.

SALE SITE PHONE: (541) 643-6102

For additional details visit our website www.I-5auctions.com