

UNRESERVED PUBLIC AUCTION

Sunday, March 22, 2015 at 10:00 A.M.

*All Day Preview: Saturday, March 21 from 9:00 A.M. to 5:00 P.M.
& 2 Hours Prior to the Sale on Sunday*

Auction Location: 121 Deady Crossing, Sutherlin, Oregon 97479

Heavy Equipment, Trucks, Trailers, Vehicles, Farm Equipment, Machine Shop, Tools & More



2004 FLEETWOOD MODEL H MOTORHOME



CASE 590 SL II TLB 4X4 WITH EXTENDAHOE HYDRAULIC AUMULET THUMB



JOHN DEERE 570A GRADER WITH RIPPERS



CAT 930 FRONT END LOADER



1996 KENWORTH

No Reserves – All Items Sell to Highest Bidder

A 10% BUYER'S PREMIUM APPLIES

For Additional Details Visit Our Website www.I-5auctions.com

I-5auctions.com

(541) 673-5636 • info@I-5auctions.com • www.I-5auctions.com

HEAVY EQUIPMENT

CASE 590 Super L Series II Tractor Loader Backhoe 4x4 Extendahoe Hydraulic Aumulet Thumb.
 CAT 930 Front End Loader.
 CAT 14E Grader with Rippers.
 JOHN DEERE 570A Grader with Rippers.
 MEDFORD Log Forks with Quick Attach Bracket for Front End Loader.

TRACTORS

FORD 335 Diesel Tractor with Front End Loader and PTO.
 FORD 4400 Diesel Tractor with PTO.
 FORD 1715 4x4 Compact Diesel Tractor with Front End Loader.

CONSTRUCTION

JLG 80HX 80' Manlift with Hydraulic Telescopic-Axes.
 Towable Gas Powered Mortar Mixer.
 Assorted NEW Galvanized Culvert.
 (2) NEW LONCIN MS10 6.5 HP Plate Compactors.
 (2) NEW LONCIN MS20 6.5 HP Plate Compactors.
 (2) NEW LONCIN MS100 6.5 HP Plate Compactors.
 NEW LONCIN MS160 Reversible 6.5 HP Plate Compactor.
 NEW LONCIN MS330 Reversible Plate Compactor.
 NEW LONCIN LTR72 6.5 HP Jumping Jack.
 Electric Cement Mixer.



CAT 14E GRADER



FORD 335 DIESEL TRACTOR



FORD 4400 DIESEL WITH PTO



FORD 1715 4X4 DIESEL TRACTOR WITH FRONT END LOADER



JLG 80HX MANLIFT

WELDING EQUIPMENT

(2) NEW MILTON Cut 40B Plasma Cutters.
 (2) MILLER Bobcat 225G Gas Powered Portable Welder Generators.
 LINCOLN Gas Powered Portable Welder Generator.
 (3) COBRAMATIC Push/Pull Wire Feeders.
 MILLER Spectrum 1500 Plasma Cutter.
 MILLER SRH333 Welding Power Source.
 MILLER Dialarc 250 Welder.
 MILLER XMT300 Welder.
 THERMO DYNAMICS Plasma Cutter.
 AIRCO Airmatic Wire Feeder.
 L-TEC Mig 35 Wire Feeder.
 CRAFTSMAN Wire Feed Welder.
 MILLER Thunderbolt Arc Welder.
 AIRCO 250 AMP Welder with Remote Wire Feed.
 LINCOLN 150 AMP MIGMATE Welder with Wire Feed.
 (2) LINCOLN 225 Arc Welders.
 LINCOLN Idealarc 250 Welder.

FARM EQUIPMENT

NEW TURCO TC180 3-Pt. 6' Heavy Duty Rototiller.
 MASSEY FERGUSON 3-Pt. Mower.
 POWDER RIVER Round Bale Feeders.
 3-Pt. Single Shank Ripper.
 LAND PRIDE 3-Pt. 7' Rear Blade.
 FORD 3-Pt. Two Bottom Plow.
 3-Pt. Hydraulic Wood Splitter.
 3-Pt. 50-Gallon Fiberglass Tank Sprayer.
 LAND PRIDE 3-Pt. 9' Heavy Duty Rear Blade with Hydraulic Tilt and Angle.
 3-Pt. 5' Springtooth Harrow.
 3-Pt. 6' Box Scraper.
 3-Pt. 5' Offset Disc.
 KING CUTTER 3-Pt. 6' Rock Rake.
 JOHN DEERE 3-Pt. 5' Rear Blade.
 Pickup Stock Rack.
 FORD 903 3-Pt. Post Hole Digger.
 10' Flex Harrow.
 Assorted Fence Supplies Incl. Electric Fence Supplies, Barbed Wire, Steel T-Posts and More.
 6' Offset Disc.

BIG VALLEY Field Bunk Livestock Feeders.
 Assorted Poly Livestock Feeders and Tanks.
 Vintage JOHN DEERE Side Delivery Hay Rake.
 Vintage Hay Rake.
 ALLIED Adjustable 7-9' Tandem Offset Disc on Rubber.
 BUSH HOG 3-Pt. 5' Rotary Cutter.
 10' Spike Tooth Harrow.
 MASSEY FERGUSON 3-Pt. 8' Tandem Offset Disc.
 MASSEY FERGUSON 3-Pt. 6' Rotary Cutter.
 HOWSE 3-Pt. 6' Rotary Cutter.
 FORD 3-Pt. 7.5' Flail Mower.
 KRONE 3-Pt. 4.5' Rototiller.
 MALLETTI 3-Pt. 3' Rototiller.
 BIG VALLEY Self Catching Livestock Squeeze Chute with Electronic Scales.
 BIG VALLEY A.I. Gate.
 BIG VALLEY 20' Crowding Alley.
 BIG VALLEY Tub Sweep.
 BIG VALLEY 10' Livestock Panels.
 BIG VALLEY 12' Livestock Panels.
 BIG VALLEY 12' Feeder Panels.

BIG VALLEY 8' Bow Gates.
 LAND PRIDE Heavy Duty 3-Pt. 7' Rear Blade with Hydraulic Tilt and Angle.
 PRIEFERT Horse Stall Doors and Feeders.
 NEW 3A Livestock Supply Galvanized Livestock Panels, 12', 14' and 16'.
 NEW 3A Livestock Galvanized Gates.
 Assorted Bale Elevators.
 Pneumatic T-Post Driver.

GENERATORS, GENSETS & LIGHT PLANTS

YAMAHA 3000 iSE Generator.
 (2) GENERAC 60 kW Single Phase Diesel Gensets.
 CHAMPION 3500 Gas Powered Generator.
 YAMAHA EF3000 Inverter Generator.

FORKLIFTS

CAT V200 20,000-Lb. Diesel.
 TOYOTA Model 7FGAU50 10,000-Lb. Propane.
 HYSTER Propane with Side Shift.
 DATSUN 5,000-Lb. Propane.

TRUCKS

2000 FREIGHTLINER Legacy.
 1996 KENWORTH 4-Axle.
 1980 GMC 7000 Flatbed.
 1972 INTERNATIONAL Cab and Chassis with 3208 CAT Diesel.
 1978 INTERNATIONAL Loadstar 5-Yard Dump Truck.
 1989 FORD L7000 Diesel 5-Yard Dump Truck.
 1974 WHITE Western Star Water Truck.
 1974 WHITE Western Star Lube Truck.



NEW GALVANIZED CULVERT



NEW LONCIN MS20 PLATE COMPACTOR



NEW LONCIN LTR72 JUMPING JACK



(2) MILLER BOBCAT 225G WELDER GENERATORS



LAND PRIDE HEAVY DUTY 3-PT. 7' REAR BLADE WITH HYDRAULICS



BIG VALLEY FEEDERS



ALLIED 9' TANDEM OFFSET DISC



BIG VALLEY SQUEEZE CHUTE AND SCALES



BIG VALLEY TUB SWEEP



BIG VALLEY STOCK PANELS



BIG VALLEY FEEDER PANELS



LAND PRIDE 9' REAR BLADE



NEW 12', 14' AND 16' GALVANIZED LIVESTOCK PANELS

**No Reserves –
 All Items
 Sell to
 Highest Bidder**



CAT V200 20,000-LB. DIESEL FORKLIFT



1978 INTERNATIONAL DUMP TRUCK



1989 FORD L7000 DUMP TRUCK



1999 DODGE RAM 2500 LARAMIE SLT 4X4 DIESEL



2011 THURO-BILT SHILO EX 2-HORSE SLANT TRAILER WITH TACK ROOM



MORGAN BUILT STOCK TRAILER



2006 ARCTIC CAT TRV500



2006 HONDA FOREMAN 400 4X4



2003 CHEVROLET SILVERADO



1997 CHEVROLET Z-71



1987 FORD F-250



2002 CHRYSLER PT CRUISER



2002 JEEP WRANGLER



2002 CHEVROLET 3500 PASSENGER



2000 ACURA



1999 JEEP GRAND CHEROKEE



1998 HONDA ACCORD



1997 CHEVROLET CORVETTE



1993 FORD EXPLORER 4X4



1977 JEEP RENEGADE



ASSORTED TOOL CHESTS

2002 JEEP Wrangler.
 2002 CHEVROLET 3500 Passenger Van.
 2000 ACURA Sedan.
 1999 FORD Taurus.
 1999 JEEP Cherokee.
 1999 HONDA Civic.
 1998 HONDA Accord.
 1997 CHEVROLET Corvette.
 1997 BUICK LeSabre.
 1993 FORD Explorer 4x4.
 1989 FORD Bronco II.
 1986 CHEVROLET Camaro Z28 IROC.
 1977 JEEP Renegade.

MOTORCYCLES

2007 SUZUKI G600 Street Bike.
 1979 YAMAHA XS1100.
 1978 YAMAHA XS1100.

SHOP TOOLS & EQUIPMENT

WORTHINGTON 7.5 HP Electric Tank Mount Air Compressor.
 Tank Mounted Gas Engine Powered Air Compressor.
 MARKETTE M215 Engine Diagnostics Cabinet.
 BEADBLAST Cabinet.
 NEBEL Engine Lathe.
 SOUTHBEND Engine Lathe.
 IPS 5/8" Pedestal Mount Drill Press.
 PORTER CABLE 14" Chop Saw with Stand.
 Assorted Sand Blasting Pots.
 MAKITA 14" Chop Saw with Table.
 MILWAUKIE 14" Chop Saw.
 DELTA 10" Table Saw with Extended Fence and Table.
 CRAFTSMAN 10" Table Saw.

DREMEL Scroll Saw.
 DELTA Belt Sander.
 3/8" Bench Top Drill Press.
 CRAFTSMAN Tank Mounted Air Compressor.
 (2) JET Dust Collectors.
 6 x 20" Thickness Planer.
 SPEEDAIRE Tank Mounted Air Compressor.
 SANDBORN Tank Mounted Air Compressor.
 CENTRAL MACHINERY Horizontal Metal Band Saw.
 DELTA 9" Band Saw.
 CRAFTSMAN Scroll Saw.
 FOREMOST 6" Jointer.
 FOREMOST Combination 6" Belt and 9" Disc Sander.
 CENTRAL MACHINERY 14" Wood Cutting Band Saw.
 CRAFTSMAN 12" Woodcutting Band Saw.
 CRAFTSMAN 12" Laser Slide Compound Miter Saw with Table.
 RIGID 12" Slide Compound Miter Saw.
 CRAFTSMAN 10" Table Saw with EXACT L Fence.
 DeWALT 6 x 12" Thickness Planer.
 Vintage TITAN Power Saw.
 Assorted Floor Jacks, Battery Chargers, Space Heaters, Shop Vacs.
 Assorted WARNER 6' Fiberglass Step Ladders.
 Assorted Power and Hand Tools, Incl. MILWAUKIE, DEWALT, PORTER CABLE, MAKITA, STANLEY, CRAFTSMAN and More.
 Assorted Roll-Around Tool Chests, Work Benches, Woodworking Tables.

Chain Saws.
 Assorted Clamps, Jigs and Supplies.
 Bench Top Grinders.
 Bottle Jacks.
 Anvil and Much More.

HOME & GARDEN

BOLENS Lawn and Garden Tractor with Rear Tiller and Front Blade.
 Assorted Cement Pavers.
 CRAFTSMAN LT3000 Riding Lawn Mower with 42" Mower Deck.
 HONDA 4514 Riding Lawn Mower with 38" Mower Deck.
 TROYBUILT 10 HP Gas Chipper Shredder.
 YARD MACHINE 8 HP Gas Chipper Shredder.
 CRAFTSMAN 8 HP Gas Chipper Shredder.
 4 HP Gas Powered Portable Pressure Washer.
 KING O'LAWN Gas Powered Lawn Edger.
 HUSQVARNA 21" Rear Bag Lawn Mower.
 MURRAY 21" Rear Bag Lawn Mower.
 HYDROSTAR 5 HP Gas Powered Pressure Washer.
 COLEMAN Powermatic Gas Powered Pressure Washer.
 EX-CELL 6.5 HP Gas Powered Pressure Washer.
 STONE Brand Plate Compactor.
 Gas Powered Portable Air Compressor.
 DR Towable Chipper with 18 HP Gas Engine.
 Assorted NEW Plumbing Fixtures Incl. Bathtubs, Sinks, and Toilets.
 15-Gallon Poly Tank 12v Sprayer and More.

TRAILERS

2011 THURO-BILT Shilo EX 2 Horse Slant Trailer with Tack Room.
 1992 MORGAN BUILT 16' 2-Axle Stock Trailer.
 18' 2-Axle Flat Bed Trailer with Aluminum Deck and Diamond Plate Toolbox.
 18' 2-Axle Equipment Trailer with Ramps, Electric Jack and Toolbox.
 13' 2-Axle Equipment Trailer with Aluminum Deck and Ramps.
 NEW Glide FFA Built 5 x 10 Single-Axle Utility Trailer.
 7 x 8 Single-Axle Aluminum ATV Trailer with Side Ramps.
 YACHT CLUB 4 x 10 Single-Axle Tilt-Deck Quad Trailer.
 KARTOTE Car Dolly.
 5 x 8 Homebuilt Flat Bed Trailer and More.

RVs

2004 FLEETWOOD 36' Diesel Motorhome.
 1999 NASH 26' Travel Trailer.
 1985 COACHMAN 30' 5th Wheel Trailer.
 FLEETWOOD Pace Arrow Motorhome.

ATVs

2006 ARCTIC CAT TRV500 4x4 with Passenger Seat, Gun Rack and Rear Rack.
 2006 HONDA Foreman 400 4x4.
 2007 KTB 125.
 2005 HONDA 400.
 YAMAHA Warrior.

PICKUPS

2003 CHEVROLET Silverado.
 1999 DODGE Ram 2500 Laramie SLT 4x4 Diesel Extended Cab.
 1997 CHEVROLET C15 271.
 1995 FORD F-250 4x4.
 1992 FORD F-150 with Canopy and Ladder Rack.
 1991 CHEVROLET 1500 with Cross Bed Toolbox.
 1987 FORD F-250.
 1982 CHEVROLET 20 Silverado with Lumber Rack.

PASSENGER VEHICLES

2011 FORD Crown Victoria Police Interceptor.
 (2) 2009 FORD Crown Victoria Police Interceptors.
 2002 CHRYSLER PT Cruiser.

I-5auctions.com

142 Deady Crossing, Sutherlin, Oregon 97479
(541) 673-5636

www.I-5auctions.com

UNRESERVED PUBLIC AUCTION

Presorted
First Class Mail
U.S. Postage
PAID
Eugene, Oregon
Permit No. 17

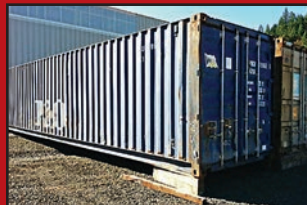
Auction Location: 121 Deady Crossing, Sutherlin, Oregon 97479

**Sunday
March 22, 2015
at 10:00 A.M.**

**Heavy Equipment, Trucks, Trailers, Vehicles,
Farm Equipment, Machine Shop, Tools & More**



2000 FREIGHTLINER LEGACY



40' CONTAINERS



1948 CHEVROLET
CABOVER FB TRUCK

MISCELLANEOUS

(2) 40' Shipping Containers.
500-Gallon Poly Potable
Water Tank.
55" and 72" Flat Screen TVs.
PORT-A-BOTE Genesis III Folding
Boat with Evinrude Motor.
Commercial Leather
Sewing Machine.
Vintage Cash Register.
GENERAL Model E Professional
Meat Grinder.
JENN-AIR Wall Oven.
JENN-AIR Range Hood.

JENN-AIR 5-Burner Cooktop.
Walk-Behind Electric
Floor Sweeper.
9' Flat Bed Diamond Plate Steel
Decked Truck Bed.
Assorted Metal Siding.
Hydraulic Truck Tail Gate.
BUTCHER BOY Meat Band Saw.
ALL AMERICAN Meat Band Saw.
HOBART Mixer with Meat Grinder
Attachment.
BERKEL Steak Cuber.
KRESKY Propane Heater.
7' Stainless Steel Bar Sink.

Vintage Claw Foot Tub.
Soaking Tub.
Rolls of Chicken Wire, new.
Metal Engraver.
Tow Bars.
Tire Chains.
LOCKERBIE Pottery Wheel.
Miscellaneous Bearings.
Chain Link Fence Panels.
TOLEDO Scales.
Pressure Treated Timbers.
Steel Plate, Pipe and Tubing.
Tires and Wheels.

Utility Trailers.
Shelving and Pallet Racking.
SKOOKUM, TIMKEN and YOUNG
Tail Blocks.
Talkie Tooter Bugs.
Assorted Sporting Goods, Incl.
Fishing Rods, Reels, Tackle, Gun Safe,
Gun Vice, Shooting Bench and Targets
and Much More!

Sunday, March 22, 2015 at 10:00 A.M.

*All Day Preview: Saturday, March 21 from 9:00 A.M. to 5:00 P.M.
& 2 Hours Prior to the Sale on Sunday*

TERMS OF SALE

Cash, credit cards, cashier's check, or your approved company or personal check. No purchases may be removed until paid for in full. Purchasers paying with personal or business checks may not take delivery of sale items in excess of \$2,000 without a letter of guarantee from their bank or until their check is honored by their financial institution. Letters of guarantee must be appropriately dated and addressed to "I-5 Auctions" and state, "This letter of guarantee is not revocable and Bank will guarantee payment on purchaser's check even in the event purchaser places or attempts to place a stop payment order on his or her check." All purchasers must read and acknowledge the terms of sale provided at the auction. All items are sold "as is, where is" with no express or

implied warranties. I-5 Auctions shall not be held responsible for advertising inaccuracies. A 10% buyer's premium will be applied to all purchases.

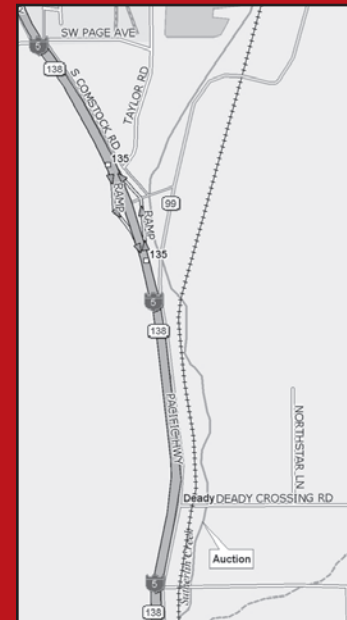
REMOVAL OF ITEMS

All items must be removed on or before Wednesday, March 25, at 5:00 P.M. unless other arrangements are made with I-5 Auctions.

DIRECTIONS

Take I-5 Exit 135 (South Sutherlin-Wilbur Exit) and proceed to east side of I-5. Turn right (south) and proceed one mile to sale site on your left. Watch for auction signs.

SALE SITE PHONE: (541) 643-6102



No Reserves – All Items Sell to Highest Bidder

A 10% BUYER'S PREMIUM APPLIES

For additional details visit our website www.I-5auctions.com